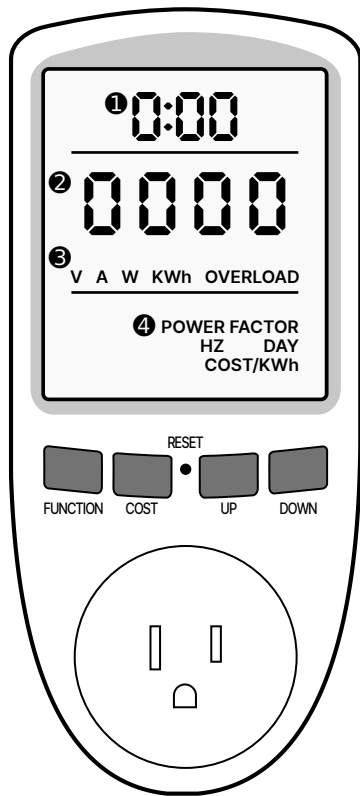


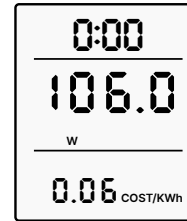
WATTMETER INSTRUCTIONS



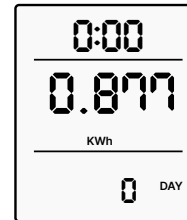
- ❶ **Run time** Each 24 hours adds 1 **DAY**.
- ❷ **Power display** Volts, Amps, Watts, kWh.
- ❸ **V:** volts, **A:** amps (current), **W:** watts, **KWh:** kilowatt/hour (electricity consumption), **OVERLOAD:** power overload reminder.
- ❹ **HZ:** AC frequency, **DAY:** Elapsed day count, **COST:** Total cost of electricity since recording began. **COST/KWh:** Price of electricity (set by user), **POWER FACTOR:** Active power and apparent power ratio.

FUNCTION Cycle through *displays*.
COST Show user set cost of electricity.

- Setting the Cost:**
- Long press **COST** to edit. **COST/KWh** will flash.
 - Press **FUNCTION** to cycle through digits.
 - Press **UP/DOWN** to change digits.
 - Press **COST** to save and exit.



Display 1:
Shows the amount of watts currently being drawn and the total cost of electricity since measurement began.

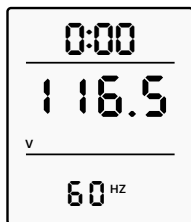


Display 2:
Total kilowatt hours used and number of days elapsed.

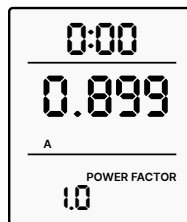
The **Watt Meter** is used to measure the electricity consumption of household appliances and calculate the cost of the electricity used.

The built-in rechargeable battery charges when the unit is plugged in.

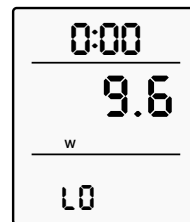
Press the **RESET** button to reset the system to the factory default settings and restart the time measurement. The **Cost/kWh** will have to be reentered after resetting.



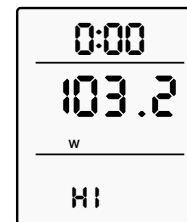
Display 3:
Power supply voltage and frequency. Should be around 120v and 60hz in the U.S.A.



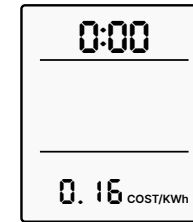
Display 4:
Real -time current of the connected appliance.



Display 5:
Minimum power draw so far.



Display 6:
Maximum power draw so far.



Display 7:
Shows the user set cost of electricity.

DATA LOG

NAME

DATE

INSTRUCTOR



APPLIANCE

APPLIANCE

APPLIANCE

COST/KWH

COST/KWH

COST/KWH

START TIME

START TIME

START TIME

START DATE

START DATE

START DATE

END TIME

END TIME

END TIME

END DATE

END DATE

END DATE

MIN POWER

MIN POWER

MIN POWER

MAX POWER

MAX POWER

MAX POWER

TOTAL TIME

TOTAL TIME

TOTAL TIME

TOTAL KWH

TOTAL KWH

TOTAL KWH

TOTAL COST

TOTAL COST

TOTAL COST

NOTES

NOTES

NOTES